

WHO ARE YOU SERVING?

THREE POPULATIONS SERVED

Each district has the flexibility to determine the model that best serves their populations. The following are services options that may work.

Enrolled Students

Students enrolled in your school district ages 5-18 attending on campus classes.

Enrolled Virtual Students

Students enrolled in your school district ages 5-18 attending remote or virtual classes.

Closed Enrolled Model

If you are serving this population, you must operate NSLP.

Open Enrolled Model

If you are serving all of these populations.

Children in the Community 0-18

Students, their younger siblings, and other children in the community 0-18 years of age.



Food and Nutrition Division
COVID-19



TEXAS DEPARTMENT OF AGRICULTURE
COMMISSIONER SID MILLER
This product was funded by USDA.
This institution is an equal opportunity provider.



Updated 09/2020
www.SquareMeals.org

HOW ARE YOU SERVING?

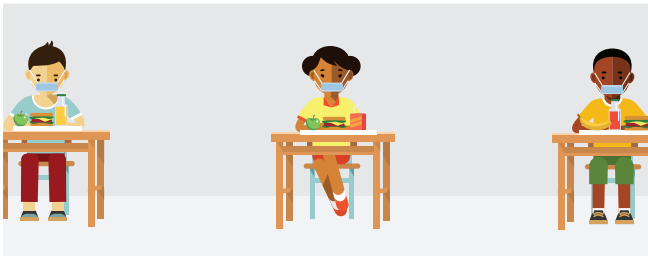
FOUR MEAL SERVICE MODEL OPTIONS

Each district has the flexibility to determine the model that provides the best fit for their operations. The following are four models that may work.



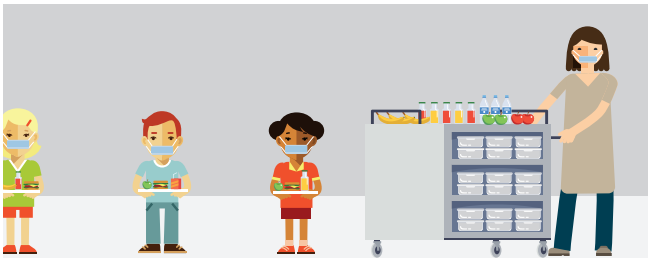
Socially Distant Cafeteria

Meals are served to students in the cafeteria with additional safety, distancing and sanitation practices implemented. These meals may be served to enrolled students and/or children in the community.



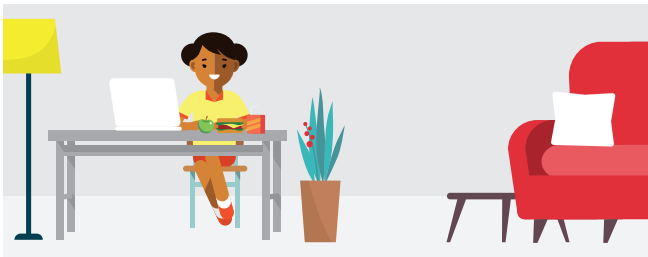
Meals in the Classroom

Meals are served to students in the classroom. These meals may be served to enrolled students and/or children in the community.



Mobile Cafeterias

Meals are served on mobile food carts located throughout a school's campus. These meals may be served to enrolled students and/or children in the community.



Offsite Meals

Students that elect to continue distance learning are provided meals through delivery or a grab-and-go model. These meals may be served to enrolled students and/or children in the community.



Food and Nutrition Division
COVID-19



TEXAS DEPARTMENT OF AGRICULTURE
COMMISSIONER SID MILLER

This product was funded by USDA.
This institution is an equal opportunity provider.



Updated 09/2020
www.SquareMeals.org